



Overview

Azserv.co.uk is now pleased to offer a range of services related to condition monitoring as itemised below.

- Coverage of all non intrusive technologies, vibration, tribology(study of oil properties), and thermal imaging.
- Training both informal and formal with accredited certification, dependent upon requirements.
- Trouble shooting. Using all techniques applicable dependent upon identified possible root causes.
- Programme setup and development, which can include plant asset assessment and technology deployment, database construction and node identification.
- Technology supply, hardware, software and ongoing support.
- Equipment health check, commissioning and corrective procedures.

20 Gower Crescent
Chesterfield
Derbyshire
S40 4LX

Web: www.azserv.co.uk
Tel: 01246 823733
Mobile: 0772 3322 008
e-mail: gareth.bowman@azserv.co.uk

Contents

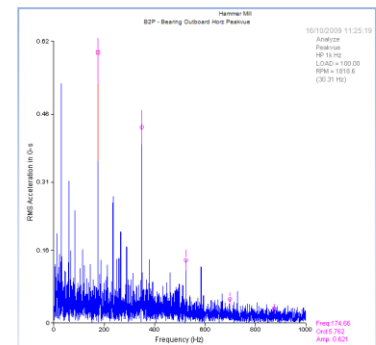
Overview	1
Outline of services available.	3
1 - Remote analysis of vibration data	3
2 - Initial informal on-site training	3
3 - Ongoing support for basic vibration analyst.....	3
4 – Regular contract services	4
5 – Corrective services	4
6 - New programme start-ups.....	4
7 – Trouble shooting and high level diagnostics	4
8 – Oil sampling and diagnostics.....	4
9 – Thermal image surveys	5
10 – Established system review and recommendations.....	5
11 – Hardware installations	5
12 – Online systems	5

Outline of services available.

Azserv have the following services available, the elements are independent and can be modified and refined based upon your final requirements as we understand these processes are totally flexible.

1 - Remote analysis of vibration data

This data would be collected by the onsite team and then forwarded to Azserv for analysis and report back, we would base this on critical and non-critical equipment with a turnaround of 12-24hr for critical plant and within 48hr for non-critical plant, number of days allocated to this operation will be fluid until Azserv can assess size of database and estimated time to analyse data, initially this would be an intensive process until full understanding of historical data can be determined.



2 - Initial informal on-site training

This training can be tailored to suit requirements and is based around the AMS suite (formally CSI) packages, although the vibration theory can be taught to any customer just requiring a refresher or basic understanding of what vibration analysis is.



- Basic vibration analysis
- Basic operation of the portable analyser
- Basic Software Training
- Analysis
- Reporting

3 - Ongoing support for basic vibration analyst

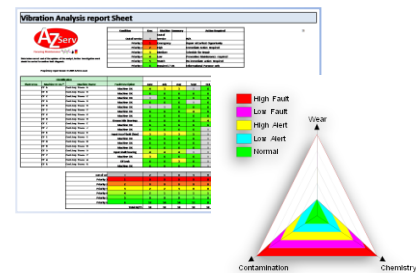
Over the following twelve month period interactive support would be given to the new engineers and this would be a mix of onsite presence and remote support, which we envisage would require an initial period of time being on site to assist the development and confidence of the engineers with Azserv taking lesser role as they gain and develop individual skills with the vibration analysis technique, hardware and software.

4 – Regular contract services

Where the company require outsourcing of this high level service Azserv.co.uk can supply engineers to setup, execute and perform regular data collection and analysis of machinery health, with feedback and reporting to the required onsite team.

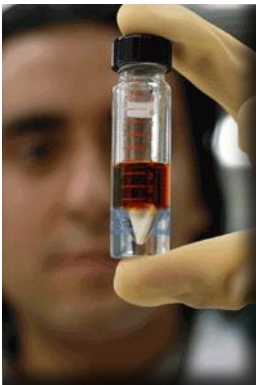
5 – Corrective services

As part of the remedial action process of problems identified with the use of this technology we can offer precession alignment and dynamic balance of equipment, this includes both training and services for ad-hoc systems.



6 - New programme start-ups

Azserv.co.uk can offer guidance and pragmatic solutions to the start-up of new condition monitoring programmes with all elements from node identification, machine criticality, equipment specification and supply, database build, routine setup and initial comprehensive baseline surveys.



7 – Trouble shooting and high level diagnostics

Due to complexity of machinery problems Azserv.co.uk would like to offer the service of problematic machinery diagnosis, using Azserv.co.uk as an independent company we can offer an impartial view on the machinery health and suggest possible corrective actions.

8 – Oil sampling and diagnostics

As complementary technology to vibration, oil sampling can be a way to help diagnose machinery problems and confirm identified failure modes. This work is carried out offsite at our laboratory with results being returned within 3working days for routine surveys, with quicker turn-around for urgent samples.

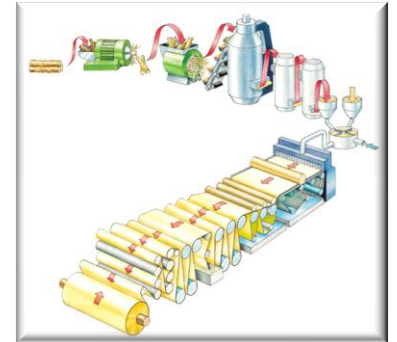


9 – Thermal image surveys

The use of thermal imaging systems to see heat related problems compliments the whole package of non-intrusive maintenance techniques to identify maintenance tasks to ensure plant efficiency and the correct maintenance is performed.

10 – Established system review and recommendations

As we know predictive maintenance is a living entity and thus requires a degree of maintenance during the life time of the system, Azserv.co.uk can offer review services and maintenance functions to the existing setup with detailed report and suggested solutions to align the system to the customer requirements.



11 – Hardware installations

Some inaccessible machinery may require hardware remotely installed, we can undertake site survey, recommendations, supply and installation of this equipment.



12 – Online systems

Azserv.co.uk can support online machinery health system utilising the Machinery health continuous monitor (Emerson product family). This offering can be tailored to suit requirements from concept, specification, install management, setup and commissioning, monitoring and existing system maintenance.